



FOR IMMEDIATE RELEASE

May 13, 2026

**Media Contacts**

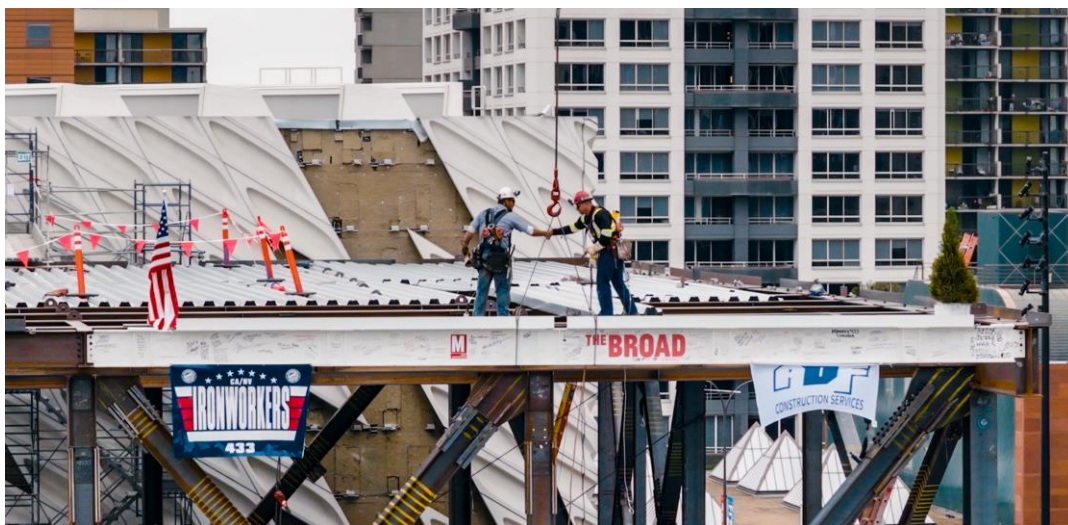
Eva Seta | [eseta@thebroad.org](mailto:eseta@thebroad.org)

Ruth Frankel | [ruth.frankel@finnpartners.com](mailto:ruth.frankel@finnpartners.com)

**THE BROAD MARKS A MILESTONE IN ITS EXPANSION PROJECT AS IT PLACES THE FINAL STEEL BEAM ON ITS NEW DOWNTOWN L.A. BUILDING**

*The Topping Out Celebrated the Workers Building the Expansion, with Civic and Cultural Leaders and a Livestream from the Steelworkers' Point of View*

*The Expansion by Diller Scofidio + Renfro, on Track to Open Before the Olympic and Paralympic Games in 2028, Will Increase Gallery Space by 70%*



Steelworkers Kristian Garcia (left) and Brett Temple (right). Photo by Shafik Fadi. Courtesy of The Broad.

**PHOTOS AND VIDEOS**

**LOS ANGELES, CA**—The Broad reached a major milestone today as the final steel beam of its expansion was lifted into place by crane, completing the new building’s structural framework. **Joanne Heyler**, Founding Director and President, and **Edythe L. Broad**, Co-Founder, welcomed civic and cultural leaders to the Downtown L.A. site to sign the beam before it rose, and the museum livestreamed the milestone moment from the steelworkers' point of view. Designed by Diller Scofidio + Renfro (DS+R) and built by MATT Construction, the same team behind the original building, the 50,000-square-foot expansion will increase gallery space by 70%. The project, which

adjoins the existing museum building, remains on schedule for an opening in 2028 before Los Angeles welcomes the world for the Olympic and Paralympic Games.

The expansion responds to the growth of both The Broad's audience and its collection, opening entirely new chapters in the visitor journey. Since opening in 2015, the museum has welcomed over 7 million visitors, nearly four times its original projections, and continues to draw close to a million visitors annually. With the dramatic increase in gallery space, the museum will put far more of its deep holdings on view at once, including acquisitions never before displayed. An unprecedented experience of art storage will invite visitors to circulate among painting racks on the expansion's second floor, and outdoor courtyards on the third floor will open to the sky. A dedicated event space on the first floor will support The Broad's signature live programming, which creates unexpected entry points to the collection and exhibitions.

The topping out ceremony included remarks by **Joanne Heyler**, President of East West Bank Foundation **Travis Kiyota**, L.A. City Councilmember **Ysabel Jurado**, **Elizabeth Diller** of Diller Scofidio + Renfro (DS+R), and Chairman of MATT Construction **Steve Matt**.

More than 200 guests were in attendance, including **Gerun Riley**, President, The Broad Foundation; **Nate Zeisler**, Provost, Colburn School; **Fareez Giga**, Senior Associate, **Kevin Rice**, Principal, and **Ching Ying Ngan**, Architect, Diller Scofidio + Renfro; **Suzanne Holley**, President & Chief Executive Officer, DTLA Alliance; **Yuko Kaifu**, President, Japan House Los Angeles; **Patricia Wyatt**, President and CEO, Japanese American National Museum; **Mary Leslie**, President, Los Angeles Business Council; **Max Reyes**, Senior Director of Economic Policy, Los Angeles City Planning; **Jessica Coreas** and **Waqas Rehman**, Office of L.A. County Chair Pro Tem and Supervisor to the First District, Hilda L. Solis; **Maya Emsden**, Executive Officer, Arts & Community Enrichment, Los Angeles Metro; **Stacy Lieberman**, President and CEO, and **John Szabo**, City Librarian, Los Angeles Public Library; **Joseph V. Healy**, Chief Operating Officer, and **Brian Saenger**, President and CEO, MATT Construction.

A topping out ceremony is a celebration honoring the skill and dedication of the construction team, marking the moment they complete the structure and the building's shape becomes legible. In keeping with custom, MATT Construction workers mounted a tree sapling and a U.S. flag on the final beam before lifting it by crane approximately 90 feet above Hope Street. The *Los Angeles Times* brought the moment to a wider audience by streaming live footage from the first-person perspectives of steelworkers Brett Temple and Kristian Garcia, who received the beam and secured it atop the structure. The video, which ended with a handshake between the two steelworkers, was also streamed across The Broad's [Instagram](#) and [YouTube](#) channels. As the beam rose, guests on the ground celebrated to music from [LIVE AT THE BROAD MUSEUM, an album by the Osees](#).

**Edythe L. Broad** said, "Eli and I always wanted as much of the collection as possible to be seen by everyone. The millions who have already visited tell us how much The Broad matters to Los

Angeles, and this expansion will open the collection to even more people, in new and unexpected ways, than we ever thought possible.”

**Joanne Heyler** said, “Last April, when we broke ground on our expansion, we set out to take the distinctive access to art offered at The Broad, and go even further. The expansion will create entirely new encounters with works that challenge and move us, placing fresh lenses on our growing collection. We are building this new space to extend our deep commitment to reaching a wide audience and creating an institution designed to inspire in inclusive, generative ways.”

**Elizabeth Diller** said, “This is a significant milestone for The Broad, the moment our new '*companion*' building finally assumes its presence on the site, allowing us to imagine the impact the museum’s enlarged capacity will have on new curatorial pursuits and public engagement.”

**Steve Matt**, Chairman of MATT Construction, said, “Building the original Broad was one of the greatest achievements in MATT Construction’s history, so to be trusted with this expansion is an extraordinary honor. Liz Diller's design pushes every boundary. It requires our teams to bring their highest level of craft and ingenuity to every detail. Watching our people rise to that challenge, on a project this meaningful to Los Angeles, is what this work is all about.”

**Councilmember Ysabel Jurado** said, "As Los Angeles prepares to welcome the world for the 2028 Games, we must invest in arts and culture in ways that expand access and reflect the diversity and creativity that define our city. The Broad’s expansion is a major investment that strengthens Downtown and reinforces LA’s place as a global center for art, inclusion, and innovation."

**East West Bank announced a major new commitment to the museum’s future** during last year’s Groundbreaking event, **signing on as The Broad’s Exclusive Grand Opening Sponsor and Leading Partner for an additional 10 years, through 2037**. As the museum’s Leading Partner since 2017, East West Bank has supported The Broad’s innovative live programs, collection displays, and unique educational offerings for children and teens, many from Title One schools.

**Travis Kiyota**, President of East West Bank Foundation, said, "The Broad has been a cornerstone of cultural life in Los Angeles since its founding, and as a leading partner since 2017, we've seen firsthand how it opens doors for people of all backgrounds and ages. At the East West Bank Foundation, we believe that exposing young people to art and creativity helps shape future leaders and empowers communities to reach further than they ever imagined. We're honored to be part of this milestone and excited for the impact this space will have for generations to come."

#

### **About The Broad**

The Broad’s mission is to make contemporary art accessible to the widest possible audience.

Founded in 2015 on Grand Avenue in downtown Los Angeles by philanthropists Eli and Edythe Broad, the museum offers free general admission and presents an active program of special exhibitions and innovative live events, all within a landmark building designed by Diller Scofidio + Renfro. The Broad is home to the Broad collection, one of the world's leading collections of postwar and contemporary art, which continues to grow as new artists and artworks are added. The museum is the headquarters of The Broad Art Foundation's worldwide lending library, which has been loaning collection works to museums around the world since 1984. [An expansion of the museum](#) will open in 2028, before the summer Olympics and Paralympics in Los Angeles, creating even greater public access and new ways to experience the Broad collection. For news and updates, sign up for email newsletters at [thebroad.org](http://thebroad.org) or follow The Broad on [Instagram](#), [Threads](#), [Facebook](#), or [YouTube](#).

**Upcoming this spring:** Yoko Ono, the visionary artist, musician, and activist whose work has shaped contemporary culture for more than seven decades, will be celebrated at The Broad in [Yoko Ono: Music of the Mind](#), the artist's first solo museum exhibition in Southern California, organized in collaboration with Tate Modern, London. Opening May 23, 2026, visitors will be invited to directly participate in many of Ono's works that transform simple acts into collective expressions of peace and connection. The Broad's olive trees on East West Bank Plaza will become *Wish Trees for Los Angeles*, a key installation (first realized in 1996 at Shoshana Wayne Gallery, Santa Monica) inviting audiences to tie their own wishes to the tree branches in a living expression of hope in Los Angeles. The exhibition will be on view through October 11, 2026.

### **About East West Bank**

East West provides financial services that help customers reach further and connect to new opportunities. East West Bancorp, Inc. is a public company (Nasdaq: "EWBC") with total assets of \$82.9 billion as of March 31, 2026. The Company's wholly-owned subsidiary, East West Bank, is the largest independent bank headquartered in Southern California, and operates over 110 locations in the United States and Asia. The Bank's markets in the United States include California, Georgia, Illinois, Massachusetts, Nevada, New York, Texas, and Washington. For more information on East West, visit [www.eastwestbank.com](http://www.eastwestbank.com).